

## 17.

Report on a Collection of Spiders and Harvestmen  
from Wyoming and Neighboring States.HERBERT W. LEVI & LORNA R. LEVI.<sup>1</sup>*University of Wisconsin Extension Center, Wausau, Wisconsin.*

(Text-figures 1-50).

The report that follows lists the species of spiders and harvestmen collected for the most part in the Black Hills region of South Dakota and the Jackson Hole and Yellowstone regions of Wyoming. Since few lists of spiders of this region are available, it was thought advisable to list the common as well as the rarer species found, together with the new species described. To make the list more usable to the ecologist, an attempt has been made to refer each species to an illustrated description of recent date rather than to follow the usual procedure of giving reference only to the original description of the species. The species of spiders whose female genitalia (epigyna) or palps have not been pictured before, or whose figures could be found only in literature difficult to obtain, have been illustrated here.

The authors hereby thank the staff of the Jackson Hole Biological Station of the New York Zoological Society for help and contributions to their collections, and especially Dr. D. C. Lowrie who permitted them to examine some of the spiders of his collection. Dr. R. V. Chamberlin has loaned a specimen. Dr. W. J. Gertsch has determined some of the more difficult species and has loaned some under his care for the purpose of making drawings. Special thanks are due to them and to Mrs. C. Crocker for help in obtaining literature.

The types of spiders described here as new have been deposited in the American Museum of Natural History, New York, N. Y.

The following abbreviations, apart from the usual abbreviations for Wyoming and South Dakota, have been used in the text:

CUSTER PARK — Custer State Park, Custer County, South Dakota.

DEVILS TOWER — Devil's Tower National Monument, Crook County, Wyoming.

TETON FOREST — Teton National Forest, Teton County, Wyoming.

TETON PARK — Grand Teton National Park, Teton County, Wyoming.

YELLOWSTONE — Yellowstone National Park, Wyoming.

## CLASS ARACHNIDA.

## Order Phalangida.

## HARVESTMEN.

## PHALANGIIDAE.

*Homolophus biceps* (Thorell), 1877.

Text-fig. 1.

Roewer, 1923, p. 880.—Comstock, 1940, p. 71.

WYO.: DEVILS TOWER. TETON PARK: Garnet Canyon (elev. 9,000 ft., in talus); Holly Lake (elev. 9,400 ft.); Cottonwood Creek (river bottom); Moran (aspen grove, inside building); Pilgrim Creek near U. S. highway 287 bridge (pine, spruce and cottonwood forest); Signal Mountain (lodgepole forest); Two Ocean Lake (elev. 7,000 ft., lodgepole forest). TETON FOREST: Brooks Mountain (elev. 10,300 ft., alpine meadow under rocks); Mt. Baldy.

*Leiobunum paessleri* Roewer, 1910. ?

Roewer, 1923, p. 896, fig. 1053.—Davis, 1934, p. 684, figs. 25, 29.

WYO.: TETON PARK: Indian Paintbrush Canyon (elev. 7,500 ft.), one doubtful female.

## Order Araneae.

## SPIDERS.

## OCHYROCERATIDAE.

*Usofla oregona* Chamberlin & Ivie, 1942.

Chamberlin & Ivie, 1942, p. 8, fig. 8.

WYO.: TETON PARK: Emma Matilda Lake (in lodgepole forest).

## THERIDIIDAE.

## COMB-FOOTED SPIDERS.

*Allotheridion differens* (Emerton), 1882.

*Theridion differens* Kaston, 1948, p. 103, figs. 123-124, 144-145, 2016.

WYO.: TETON PARK: Leigh Lake; Emma Matilda Lake (on sagebrush); Signal Mountain (on shrubs in lodgepole forest);

<sup>1</sup>This work was supported by a grant from the New York Zoological Society and was carried out in part from the Jackson Hole Biological Station of the New York Zoological Society.

Jackson Lake northwest of Moran (on sagebrush); Moran.

*Allotheridion ohlerti* (Thorell), 1870.  
Text-figs. 3, 7 & 8.

*Theridion simulatum* Emerton, 1926, p. 115, figs. 1, 2.

WYO.: YELLOWSTONE: Pebble Creek Camp Ground. TETON PARK: Emma Matilda Lake (on vegetation in open lodgepole forest).

*Allotheridion zelotypum* (Emerton), 1882.

*Theridion zelotypum* Emerton, 1882, p. 11, pl. 1, figs. 4-4a. ♀.

*T. zelotypum* Kaston, 1948. (in part) p. 109, fig. 150. ♂.

WYO.: TETON PARK: Two Ocean Lake; along Snake River near Moran (on trees in very wet woods).

*Dipoena* sp.

WYO.: TETON FOREST: Mt. Baldy.

*Lithyphantes albomaculatus* (De Geer), 1778.

Kaston, 1948, p. 78, figs. 47-50.

WYO.: TETON PARK: Pilgrim Creek (under drift wood); Uhl Hill. TETON FOREST: Gros Ventre Slide.

*Steatoda hespera* Chamberlin & Ivie, 1933.

Chamberlin & Ivie, 1933, p. 9, figs. 4-6.

WYO.: YELLOWSTONE: Indian Creek (in forest). TETON PARK: Wildlife Park; along Snake River; Moran (on building). TETON FOREST: Mt. Baldy.

*Theridion marmorata* (Hentz), 1850.

*Enoplognatha marmorata* Kaston, 1948, (in part) p. 77, figs. 35, 38.

WYO.: TETON PARK: Blacktail Butte.

*Theridion sexpunctatum* Emerton, 1882.

Emerton, 1882, p. 12, pl. 2, fig. 5.

WYO.: YELLOWSTONE: Pebble Creek Camp (lodgepole forest). TETON PARK: Cottonwood Creek. TETON FOREST: Mt. Baldy.

LINYPHIIDAE.

SHEET-WEB WEAVERS AND DWARF SPIDERS.

*Bathyphantes pullatus* Cambridge, 1863.

*B. kuratai* Chamberlin & Ivie, 1947a, p. 54, figs. 70, 71.

WYO.: TETON PARK: Cottonwood Creek (river bottom).

*Bathyphantes latescens* (Chamberlin), 1919.

Chamberlin & Ivie, 1933, p. 34, figs. 119-120.

WYO.: TETON PARK: Cottonwood Creek (along river bottom).

*Bathyphantes pallida* (Banks), 1892.

Kaston, 1948, p. 131, figs. 301-306.

S. DAK.: CUSTER PARK: near Game Lodge.

*Centromerus cornupalpis*

(O. P. Cambridge), 1875. ?

Kaston, 1948, p. 136, figs. 316-318.

WYO.: TETON PARK: Signal Mountain (lodgepole forest).

*Ceratinnella brunnea* Emerton, 1882. ?

Crosby & Bishop, 1925, p. 7, fig. 1.

WYO.: YELLOWSTONE: Pebble Creek Camp.

*Cochlembolus alpinus* (Banks), 1896.

Crosby, 1929, p. 79, figs. 1-4.

WYO.: TETON FOREST: Brooks Mountain (elev. 10,300 ft., alpine meadow, under stones).

*Cochlembolus pallidus* (Emerton), 1882. ?

Crosby & Bishop, 1933, p. 168, figs. 232-237.

WYO.: TETON PARK: Signal Mountain (in lodgepole forest); Emma Matilda Lake (on sagebrush).

*Cornicularia clavicornis* Emerton, 1882. ?

Crosby & Bishop, 1931, p. 365, figs. 18-23.

WYO.: TETON PARK: Emma Matilda Lake (lodgepole forest).

*Cornicularia* sp.

WYO.: TETON PARK: Signal Mountain.

*Diplocentria bidentata* (Emerton), 1882.

*Scotoussa bidentata* Bishop & Crosby, 1938, p. 87, figs. 69-71.

WYO.: TETON PARK: Emma Matilda Lake.

*Disembolus chera* (Chamberlin & Ivie), 1933.

*D. stridulans* Chamberlin & Ivie, 1945a, p. 226, figs. 14-18.

WYO.: TETON PARK: Lake Solitude (elev. 9,024 ft.); Amphitheater Lake (elev. 9,750 ft.), (Probably under stones in alpine meadows).

*Dismodicus decemoculatus* (Emerton), 1882.

Crosby & Bishop, 1933, p. 149, figs. 165-169.

WYO.: TETON PARK: Two Ocean Lake (on vegetation in lodgepole forest).

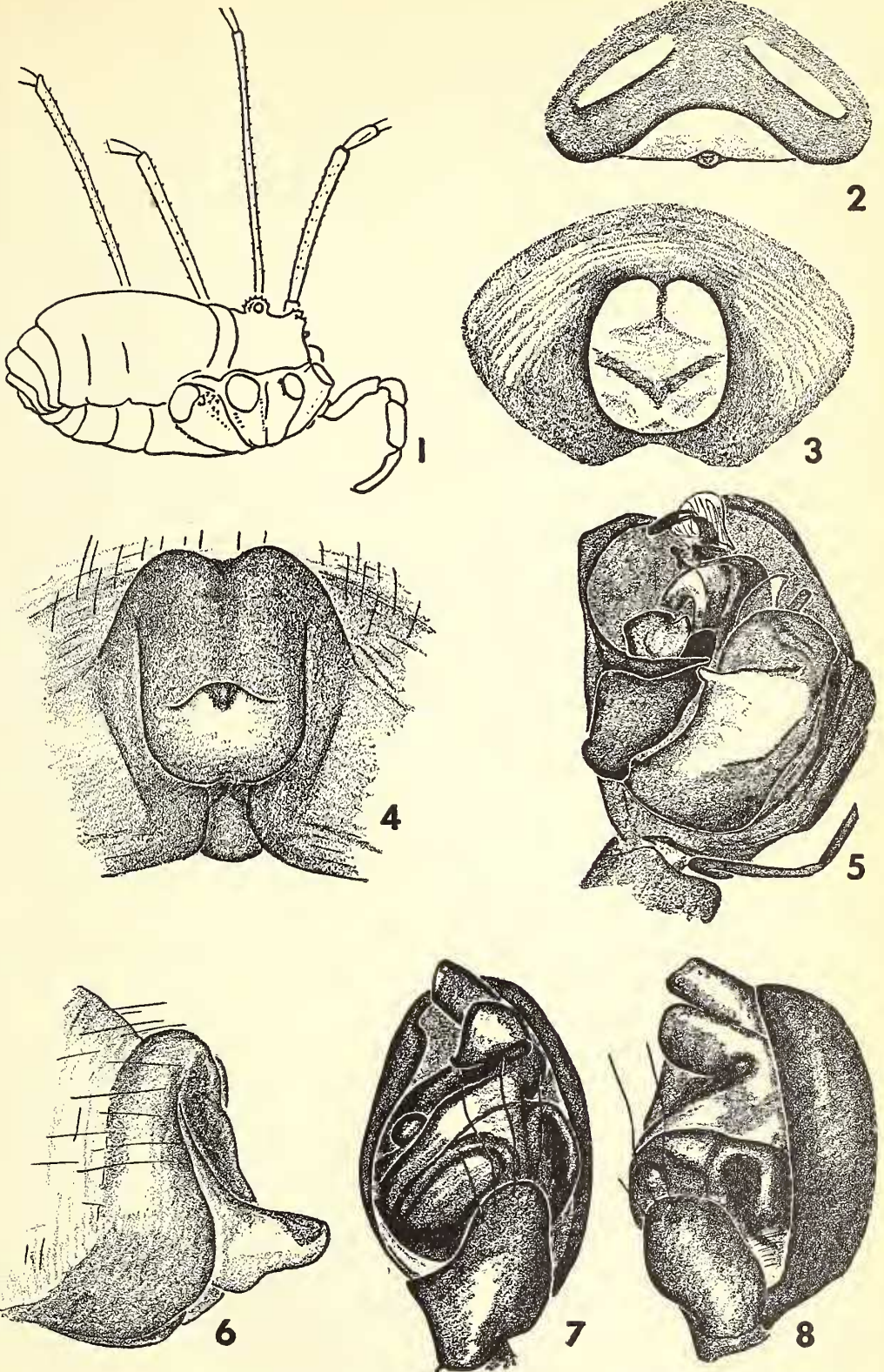
*Erigone denticulata*

Chamberlin & Ivie, 1939.

Chamberlin & Ivie, 1939, p. 57, fig. 2.

WYO.: TETON PARK: Moran (aspen grove).





TEXT-FIGS. 1-8. 1—*Homolophus biceps* (Thorell), lateral view of animal. 2—*Linyphia litigiosa* Keyserling, epigynum. 3—*Allotheridion ohlerti* (Thorell), epigynum (specimen from Finland). 4—*Lepthyphantes chamberlini* Schenkel, epigynum, ventral view. 5—*Linyphia litigiosa* Keyserling, palp, ventral view (specimen from Calif.). 6—*Lepthyphantes chamberlini* Schenkel, epigynum, lateral view. 7—*Allotheridion ohlerti* (Thorell), palp, ventral view. 8—*Allotheridion ohlerti* (Thorell), palp, lateral view.

***Eularia microtarsus*** (Emerton), 1882.

Chamberlin &amp; Ivie, 1945b, p. 6, figs. 17-18.

WYO.: TETON PARK: along Snake River near Moran (in wet woods).

***Grammonota pictilis*** (O. P. Cambridge), 1875.

Bishop &amp; Crosby, 1932, p. 403, figs. 33-36, 38-39.

S. DAK.: CUSTER PARK: near Game Lodge.

***Islandiana alata*** (Emerton), 1919.Holm, 1945, pp. 21-25, figs. 5 a-d.—not *Aduva alata* (Emerton), Bishop & Crosby, 1936, p. 39, figs. 1-3.

WYO.: TETON PARK: Uhl Hill.

***Labuella prosaica*** Chamberlin & Ivie, 1943.

Chamberlin &amp; Ivie, 1943, p. 6, figs. 7, 8 ♀.

WYO.: TETON FOREST: Brooks Mountain ♀.

***Lepthyphantes aggressus***

Chamberlin &amp; Ivie, 1943.

Chamberlin &amp; Ivie, 1943, p. 14, figs. 19-20.

WYO.: YELLOWSTONE: Pebble Creek Camp Ground. TETON PARK: Leigh Lake (lodgepole forest); Signal Mountain (lodgepole forest); Uhl Hill. TETON FOREST: Mt. Baldy (lodgepole forest).

***Lepthyphantes chamberlini*** Schenkel, 1950. ?

Text-figs. 4 &amp; 6.

Schenkel, 1950, p. 61, fig. 20.

WYO.: YELLOWSTONE: Mammoth Hot Springs. TETON FOREST: Mt. Baldy.

***Lepthyphantes complicata*** (Emerton), 1882.

Zorsch, 1937, p. 881, figs. 55-57.

WYO.: TETON PARK: Signal Mountain (probably under log in lodgepole forest).

***Lepthyphantes furcillifer***

Chamberlin &amp; Ivie, 1933.

Chamberlin &amp; Ivie, 1933, p. 32, figs. 109-112.

WYO.: TETON PARK: Pilgrim Creek (in forest); Signal Mountain (in lodgepole forest).

***Lepthyphantes lamprus*** Chamberlin, 1920.

Chamberlin, 1920, p. 195, figs. 1, 2.

WYO.: TETON PARK: Signal Mountain (in lodgepole forest).

***Lepthyphantes pollicaris*** Zorsch, 1937.

Zorsch, 1937, p. 897, figs. 91-93 ♂.

*L. tamara* Chamberlin & Ivie, 1943, p. 15, fig. 23 ♀.

WYO.: YELLOWSTONE: Pebble Creek Camp Ground. TETON PARK: Lake Solitude; Blacktail Butte; Uhl Hill. TETON FOREST: Mt. Baldy.

***Lepthyphantes rainieri*** Emerton, 1926.

Zorsch, 1937, p. 895, figs. 83-87.

WYO.: TETON FOREST: Mt. Baldy

***Linyphia litigiosa*** Keyserling, 1886.

Text-figs. 2 &amp; 5.

Blauvelt, 1936, p. 107, figs. 21-25.

WYO.: TETON PARK: Garnet Canyon.

***Linyphia marginata*** C. L. Koch, 1834.

Kaston, 1948, p. 122, figs. 220-230, 2004, 2022.

S. DAK.: CUSTER PARK: near Game Lodge.

WYO.: DEVILS TOWER. TETON PARK: Garnet Canyon; Holly Lake. TETON FOREST: Slide Lake. (This spider builds a web in low shrubs).

***Microneta fratrella*** (Chamberlin), 1919.

Chamberlin &amp; Ivie, 1933, p. 35, figs. 61, 93-95, 101-102.

WYO.: TETON PARK: Amphitheater Lake (elev. 9,750 ft.); Cottonwood Creek (river bottom).

***Minyrioloides affinis*** Schenkel, 1929.*Minyriolus aquatilis* Crosby & Bishop, 1933, p. 135, figs. 104-109.

WYO.: YELLOWSTONE: Indian Creek.

***Pelecopsis sculptum*** (Emerton), 1917.

Crosby &amp; Bishop, 1931, p. 382, figs. 80-85.

WYO.: TETON PARK: Pilgrim Creek (under drift wood).

***Pityohyphantes alticeps***

Chamberlin &amp; Ivie, 1943.

Chamberlin &amp; Ivie, 1943, p. 27, figs. 45-47.

WYO.: YELLOWSTONE: Mammoth Hot Springs (on low shrubs).

***Pityohyphantes cristatus***

Chamberlin &amp; Ivie, 1942.

Chamberlin &amp; Ivie, 1942, p. 58, figs. 141-143.

WYO.: YELLOWSTONE: Pebble Creek Camp (?). TETON PARK: Garnet Canyon; Leigh Lake (?); Signal Mountain (?); Two Ocean Lake. (This spider builds its web on low shrubs).

***Pusillia bonita*** Chamberlin & Ivie, 1943.

Chamberlin &amp; Ivie, 1943, p. 26, figs. 41, 42.

MONT.: Cooke. WYO.: YELLOWSTONE: Pebble Creek Camp Site (on vegetation in meadow). TETON PARK: Two Ocean Lake; Uhl Hill.

***Sciastes terrestris*** (Emerton), 1882. ?

Bishop &amp; Crosby, 1938, p. 79, figs. 54-56.

WYO.: TETON PARK: Pilgrim Creek



(on stones in creek bed); Cottonwood Creek (in river bottom).

### ARGIOPIDAE.

#### ORB-WEAVERS.

*Aculepeira verae* Chamberlin & Ivie, 1942. ?  
Chamberlin & Ivie, 1942, p. 75, figs. 215-216.

WYO.: YELLOWSTONE: Indian Creek.

*Araneus marmoreus* Clerck, 1757.

*Epeira raji* Kaston, 1948, p. 257, figs. 816-848, 820-822.

WYO.: TETON PARK: Moran; Signal Mountain (lodgepole forest, a large orb-web in shrubs or low trees).

*Araniella displicata* (Hentz), 1847.

*Epeira displicata* Kaston, 1948, p. 258, fig. 806.

WYO.: TETON PARK: Pilgrim Creek; Emma Matilda Lake; Signal Mountain. (Builds orb-webs in light woods).

*Cyclosa conica* (Pallas), 1772.

Kaston, 1948, p. 236, figs. 711-713, 2037.

S. DAK.: CUSTER PARK: near Game Lodge (orb-webs on a fence).

WYO.: DEVILS TOWER. YELLOWSTONE: Indian Creek; Mammoth Hot Springs; Pebble Creek; Lewis Lake. TETON PARK: Leigh Lake; Jackson Lake northwest of Moran; Pilgrim Creek; Signal Mountain. (Builds orb-webs in light woods).

*Cyclosa turbinata* (Walckenaer), 1841.

Kaston, 1948, p. 337, fig. 710.

WYO.: DEVILS TOWER.

*Epeira patagiata* (Clerck), 1757.

*E. dumetorum* Kaston, 1948, p. 255, figs. 788, 804, 813.

S. DAK.: CUSTER PARK: near Game Lodge.

WYO.: TETON PARK: Leigh Lake; Jackson Lake northwest of Moran; Signal Mountain; Moran; Two Ocean Lake. TETON FOREST: Gros Ventre Slide. (The orb webs of this spider were found in forests).

*Tetragnatha laboriosa* Hentz, 1850.

Kaston, 1948, p. 269, figs. 850-851, 859-861.

WYO.: TETON PARK: Cottonwood Creek; Gros Ventre River; Jackson Lake northwest of Moran; Moran; Pilgrim Creek; Emma Matilda Lake. TETON FOREST: Gros Ventre Slide. (This spider was found in meadows).

*Tetragnatha versicolor* Walckenaer, 1841.

Kaston, 1948, p. 270, figs. 852, 862-864.

S. DAK.: CUSTER PARK: near Game Lodge.

WYO.: YELLOWSTONE: Heart Lake. TETON PARK: Amphitheater Lake; Leigh Lake; Cottonwood Creek; Pilgrim Creek; Moran; Gros Ventre River; Jackson Lake northwest of Moran; Two Ocean Lake; Emma Matilda Lake. TETON FOREST: Gros Ventre Slide. (The orb webs of this spider were usually found close to water).

### AGELENIDAE.

#### FUNNEL-WEB WEAVERS.

*Agelenopsis utahana*

(Chamberlin & Ivie), 1933.

Chamberlin & Ivie, 1941, p. 600, figs. 12, 23, 38.

WYO.: TETON PARK: Garnet Canyon; Leigh Lake; Signal Mountain; Two Ocean Lake; Emma Matilda Lake; Moran. (The funnel webs of this spider were usually found in shrubs in forests).

*Circurina robusta* Simon, 1886.

Chamberlin & Ivie, 1940, p. 68, figs. 53, 87.

WYO.: YELLOWSTONE: Pebble Creek Camp Ground. TETON PARK: Signal Mountain.

### LYCOSIDAE.

#### WOLF SPIDERS.

*Arctosa alpigena* (Doleschal), 1852.

Text-figs. 9 & 20.

Dahl & Dahl, 1927, pp. 67-68, figs. 174-176.

WYO.: YELLOWSTONE: Indian Creek Camp Ground (in lodgepole forest); Pebble Creek Camp Ground. TETON PARK: Amphitheater Lake (elev. 9,750 ft.). TETON FOREST: Brooks Mountain (elev. 10,300 ft., at timberline); Mt. Baldy.

*Arctosa rubicunda* (Keyserling), 1876.

Kaston, 1948, p. 319, figs. 1044-1046.

S. DAK.: CUSTER PARK: near Game Lodge.

*Lycosa frondicola* Emerton, 1885.

Kaston, 1948, p. 328, figs. 1110-1113.

WYO.: TETON PARK: Pilgrim Creek.

*Lycosa pratensis* Emerton, 1885.

*Trochosa pratensis* Kaston, 1948, p. 330, figs. 1092-1094, 1117-1118.

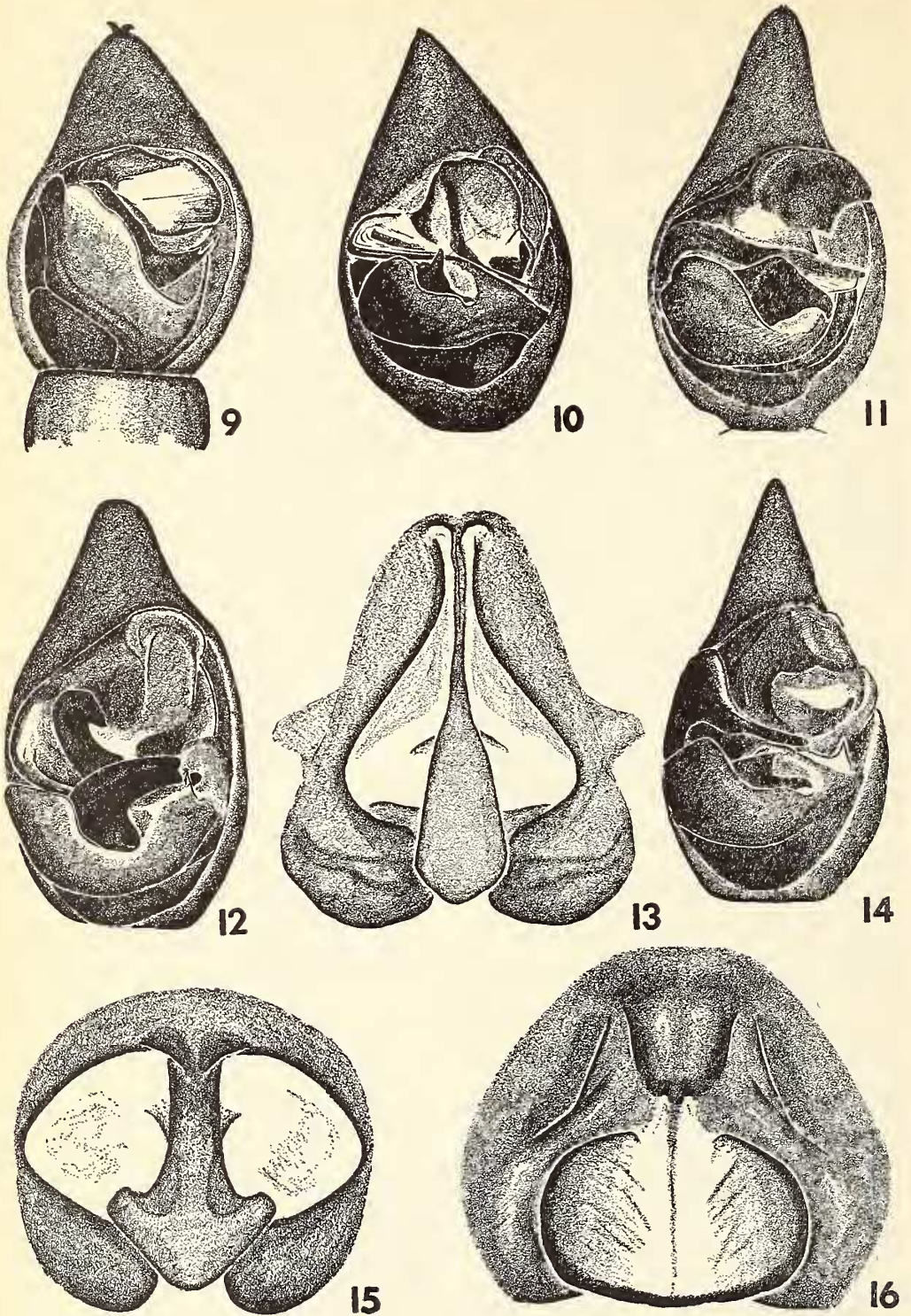
WYO.: TETON PARK: Death Canyon (elev. 8,300 ft., running between rocks); Signal Mountain; Cottonwood Creek.

*Pardosa anomala* Gertsch, 1933.

Text-fig. 10.

Gertsch, 1933a, p. 26, fig. 36 ♀.

Coloration of the male like that of the female; the structure likewise resembles that of the female. The palps are densely covered by black hair. It is illustrated by Text-fig. 10. Male allotype from Death Canyon.



TEXT-FIGS. 9-16. 9—*Arctosa alpigena* (Doleschal), palp, ventral view. 10—*Pardosa anomala* Gertsch, palp, ventral view. 11—*Pardosa solituda*, n. sp., palp, ventral view. 12—*Pardosa fuscula* (Thorell), palp, ventral view. 13—*Pardosa groenlandica* (Thorell), epigynum. 14—*Pardosa groenlandica* (Thorell), palp, ventral view. 15—*Pardosa fuscula* (Thorell), epigynum (specimen from Wisc.). 16—*Pardosa solituda*, n. sp., epigynum.



WYO.: TETON PARK: Death Canyon (elev. 8,300 ft. ♀♂ among rocks); Lake Solitude (elev. 9,024 ft., among rocks); Cascade Canyon (elev. 7,500 ft., in forest floor). TETON FOREST: Brooks Mountains ♀♂♂. SHOSHONE NATIONAL FOREST: Sublet Lake♀♂.

*Pardosa coloradensis* Banks, 1894.

*P. sternalis* Chamberlin, 1908, p. 185 (in part) pl. 14, fig. 2 ♀.

*P. ontariensis* Gertsch, 1933a, p. 18, fig. 27 ♂.

WYO.: YELLOWSTONE: Indian Creek Camp Ground. TETON PARK: Moran (running near bldgs.); Blacktail Butte.

*Pardosa concinna* (Thorell), 1877.

*P. muscicola* Emerton, 1911, p. 401, pl. 5, fig. 2.

WYO.: YELLOWSTONE: Indian Creek Camp Ground (in meadow).

*Pardosa distincta* (Blackwall), 1846.

Kaston, 1948, p. 333, figs. 1095-1099, 1119-1121.

S. DAK.: CUSTER PARK: near Game Lodge.

WYO.: TETON PARK: Moran; Uhl Hill.

*Pardosa fuscula* (Thorell), 1875.

Text-figs. 12 & 15.

*Lycosa fuscula* Thorell, 1875, p. 501.

S. DAK.: CUSTER PARK: near Game Lodge.

*Pardosa groenlandica* (Thorell), 1872.

Text-figs. 13 & 14.

*Lycosa groenlandica* Thorell, 1872, p. 157.

WYO.: YELLOWSTONE: summit of Mt. Washburn, shore of Heart Lake. TETON PARK: Lake Solitude (elev. 9,024 ft.); Holly Lake (9,400 ft.); Amphitheater Lake (9,750 ft.); Garnet Canyon (9,000 ft.); Leigh Lake (6,870 ft.); Jackson Lake north of Moran (6,750 ft.). (This spider was collected running over stones, either the pebbles of a lake shore or boulders in alpine surroundings).

*Pardosa lapidicina* Emerton, 1885.

Kaston, 1948, p. 337, figs. 1129, 1143-1145, 2068.

WYO.: TETON PARK: Pilgrim Creek (under driftwood).

*Pardosa mackenziana* (Keyserling), 1876.

Kaston, 1948, p. 338, figs. 1133-1136.

S. DAK.: CUSTER PARK: near Game Lodge.

WYO.: Very common in all parts of YELLOWSTONE and TETON PARK in which collections were made. It was found running on the ground in many habitats.

*Pardosa moesta* Banks, 1892.

Kaston, 1948, p. 334, figs. 1122, 1123, 1137.

S. DAK.: CUSTER PARK: near Game Lodge.

MONT.: Cooke.

WYO.: TETON PARK: Two Ocean Lake (in an aspen grove).

*Pardosa sternalis* (Thorell), 1877.

Chamberlin, 1908, p. 185-188, pl. 63, figs. 5-6.

*P. altamontis* Chamberlin & Ivie, 1946, pp. 7-8, figs. 7-8 ♀.

WYO.: YELLOWSTONE: Heart Lake Geyser Basin (on surfaces of pools). TETON PARK: Two Ocean Lake; Signal Mountain Lake (on lake shore); Cottonwood Creek; Moran (between buildings near water); Gros Ventre River near highway 287 (sides of stream bed). TETON FOREST: Brooks Mountain (in pine and spruce forest).

*Pardosa tetonensis* Gertsch, 1933.

Gertsch, 1933a, p. 19, figs. 28, 38.

MONT.: Cooke.

WYO.: YELLOWSTONE: Indian Creek Camp Ground (in meadow). TETON PARK: shore of Jackson Lake northwest of Moran.

*Pardosa uintana* Gertsch, 1933.

*P. uncata* Emerton, 1894, (in part), pp. 425-426, pl. 3, figs. 8c, 8d, 8f.

WYO.: TETON FOREST: Brooks Mountain.

*Pardosa utahensis* Chamberlin, 1919.

Gertsch & Wallace, 1935, figs. 3, 7.

WYO.: TETON PARK: Blacktail Butte. TETON FOREST: Gros Ventre Slide.

*Pardosa xerampelina* (Keyserling), 1876.

Kaston, 1948, p. 337, figs. 1130-1132, 1146.

S. DAK.: CUSTER PARK: near Game Lodge.

MONT.: Cooke.

WYO.: YELLOWSTONE: Indian Creek.

*Pardosa solituda*, n. sp.

Text-figs. 11 & 16.

*Color*: Carapace a rich dark brown; eye region blackish, with no distinct markings. Clypeus and chelicerae lighter brown, with distal part of mesal border of chelicerae yellowish. Labium and endites a dusky orange, lighter at the tips. Sternum brown. Coxae dusky orange. Legs and palpi: dark brown without distinct markings. Abdomen: dorsum dark gray with a brown anterior lanceolate mark, venter brown. Spinnerets dark gray. Female lighter in color and less red.

*Structure*: Essentially typical, similar to *Pardosa groenlandica* (Thorell) from which it differs in the structure of the epigynum

and palpus. Anterior eye row shorter than the middle row, which in turn is shorter than the third row. Anterior row very slightly procurved; anterior median eyes about two-thirds their diameter apart and a little more than their radius from the smaller side eyes. Middle eyes slightly larger than the posterior ones, about one diameter apart and about one and one-half diameters from the hind eyes which are about three and one-half their own diameter from each other.

Measurements	Male	Female
Total length	9.1 mm.	9.0 mm.
Carapace		
Length	4.5	4.4
Width	3.4	3.4
Tibia-patella		
I	5.2	5.3
IV	5.9	5.9

*Records:* Male holotype from southeast shore of Lake Solitude (running between stones in meadow), Grand Teton National Park, Wyoming, elev. 9,024 ft., 31 July, 1950. Female allotype from Hidden Lake Camp, Mount Timpanogos, Utah County, Utah, elev. 9,700 ft., 31 Aug., 1939 (Amer. Mus. Nat. Hist. Coll.).

*Pirata insularis* Emerton, 1885.

Kaston, 1948, p. 310, figs. 987-988, 1005, 1011.

WYO.: TETON PARK: Moran (between buildings, near water).

*Pirata piratica* (Clerck), 1757.

Kaston, 1948, p. 309, figs. 1003, 1010.

S. DAK.: CUSTER PARK: near Game Lodge (around backwaters of Grace Coolidge Creek).

WYO.: TETON PARK: Moose ponds.

*Schizocosa wasatchensis*

Chamberlin & Ivie, 1942.

Text-figs. 17 & 18.

Chamberlin & Ivie, 1942, p. 39.

WYO.: TETON PARK: near Phelps Lake (in the shade on trail through a high meadow).

*Tarentula aculeata* (Clerck), 1757.

Kaston, 1948, p. 312, figs. 1024-1025, 2139-2140.

MONT.: Cooke.

S. DAK.: CUSTER PARK: near Game Lodge.

WYO.: DEVILS TOWER. YELLOWSTONE: Indian Creek; Pebble Creek; Heart Lake.

GNAPHOSIDAE.

*Callilepis altitudonis* Chamberlin, 1936.

Text-fig. 19.

Chamberlin, 1936a, p. 14. fig. 25 ♀.

WYO.: TETON PARK: near Amphitheater Lake (in forest).

*Callilepis imbecilla* (Keyserling), 1887.

Kaston, 1948, p. 343, figs. 1150-1151, 1158-1159.

S. DAK.: CUSTER PARK: near Game Lodge.

*Drassodes neglectus* (Keyserling), 1887.

Kaston, 1948, p. 351, figs. 1176, 1188-1189, 1195.

WYO. TETON PARK: Pilgrim Creek (under driftwood); Uhl Hill. TETON FOREST: Gros Ventre Slide.

*Gnaphosa brumalis* Thorell, 1875.

Kaston, 1948, p. 346, figs. 1156-1157, 1185.

MONT.: Cooke.

WYO.: YELLOWSTONE: Mammoth Hot Springs. TETON FOREST: Brooks Mountain (in pine spruce forest under logs).

*Gnaphosa muscorum* (L. Koch), 1866.

Kaston, 1948, p. 344, figs. 1152-1155, 1160, 1177.

S. DAK.: CUSTER PARK: near Game Lodge.

WYO.: TETON PARK: Holly Lake (under a rock); Pilgrim Creek. TETON FOREST: Mt. Baldy.

*Gnaphosa parvula* Banks, 1896.

Kaston, 1948, p. 346, figs. 1161-1162, 1184.

WYO.: TETON PARK: Signal Mountain; Emma Matilda Lake (on ground in sagebrush).

*Haplodrassus signifer* (C. L. Koch), 1839.

Kaston, 1948, p. 350, figs. 1170-1172, 1186.

WYO.: TETON PARK: Signal Mountain (on lodgepole forest floor).

*Orodassus coloradensis* (Emerton), 1877.

*Drassodes melius* Chamberlin, 1919, p. 246, figs. 4, 5.

*Orodassus coloradensis* Chamberlin, 1936b, p. 7, fig. 23 ♀.

WYO.: TETON PARK: Death Canyon (elev. 7,600 ft., in forest); Leigh Lake; shore of Jackson Lake northwest of Moran (lodgepole forest); Pilgrim Creek; Moran; Two Ocean Lake (aspen grove); Uhl Hill. (Usually found under logs or rocks).

*Poecilochroa montana* Emerton, 1890.

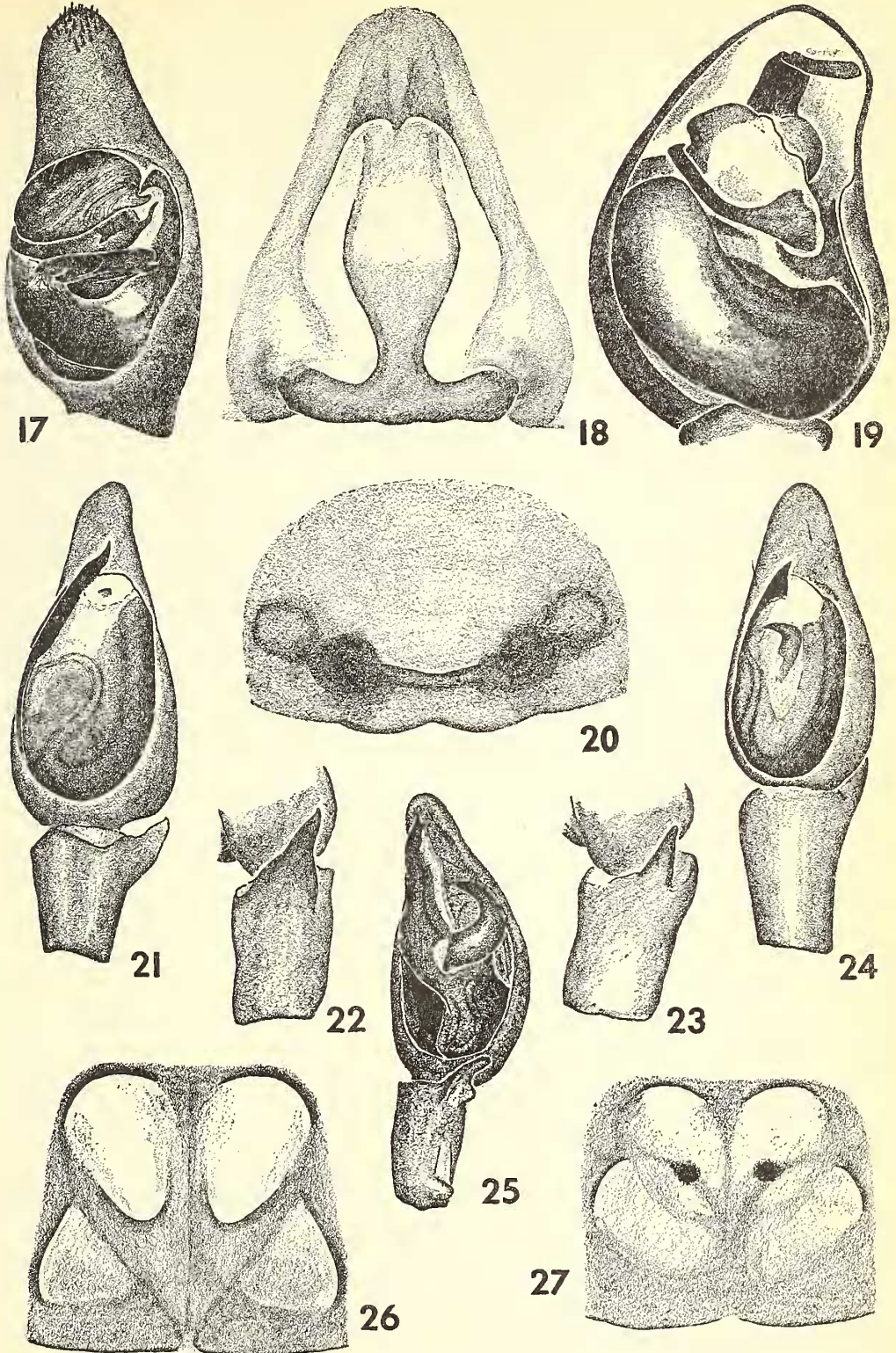
Emerton, 1890, p. 175, pl. 4, fig. 2.

WYO.: YELLOWSTONE: Mammoth Hot Springs.

*Zelotes puritanus* Chamberlin, 1922.

Kaston, 1948, p. 356, figs. 1239-1241.





TEXT-FIGS. 17-27. 17—*Schizocosa wasatchensis* Chamberlin & Ivie, palp, ventral view. 18—*Schizocosa wasatchensis* Chamberlin & Ivie, epigynum. 19—*Callilepis altitudinis* Chamberlin, palp, ventral view. 20—*Arctosa alpigena* (Doleschal), epigynum. 21—*Micaria tetonia*, n. sp., palp, ventral view. 22—*Micaria tetonia*, n. sp., tibia of palp, lateral view. 23—*Micaria coloradensis* Banks, tibia of palp, lateral view. 24—*Micaria coloradensis* Banks, palp, ventral view. 25—*Anyphaena pacifica* (Banks), palp, ventral view. 26—*Micaria jacksonia*, n. sp., epigynum. 27—*Micaria coloradensis* Banks, epigynum.

WYO.: YELLOWSTONE: Indian Creek Camp Ground (in meadow). TETON PARK: Pilgrim Creek (under driftwood); Blacktail Butte.

*Zelotes subterraneus* (C. L. Koch), 1839.

Kaston, 1948, p. 356, figs. 1248-1251.

WYO.: YELLOWSTONE: Indian Creek; Heart Lake. TETON PARK: Amphitheater Lake (elev. 9,750 ft.); Lake Solitude (9,024 ft.); Jackson Lake NW of Moran; Pilgrim Creek; Signal Mountain (lodgepole forest); Blacktail Butte. (Usually found under rocks or logs).

CLUBIONIDAE.

*Anyphaena pacifica* (Banks), 1896.

Text-fig. 25.

Bryant, 1931, p. 115, fig. 36 ♀.

S. DAK.: CUSTER PARK: near Game Lodge.

*Clubiona canadensis* Emerton, 1890.

Kaston, 1948, p. 376, figs. 1288-1290, 1344-1346.

WYO.: TETON PARK: Death Canyon (abundant under rocks in meadow near snow); Leigh Lake; Two Ocean Lake (lodgepole forest); Cottonwood Creek (under stones in river bottom).

*Clubiona kulczynskii* de Lessert, 1905.

*C. intermontana* Gertsch, 1933b, p. 9, figs. 10-13 ♂.

*C. intermontana* Gertsch, 1941b, p. 17, fig. 49 ♀.

WYO.: TETON PARK: Emma Matilda Lake (in lodgepole forest); Two Ocean Lake (lodgepole forest).

*Micaria alfana* Gertsch, 1933.

Gertsch, 1933b, p. 6, fig. 5 ♀.

Gertsch, 1935, p. 17, fig. 38 ♂.

WYO.: YELLOWSTONE: Indian Creek (in meadow). TETON PARK: Two Ocean Lake (in lodgepole forest). TETON FOREST: Gros Ventre Slide. (Usually found under logs, stones or running over the ground).

*Micaria coloradensis* Banks, 1896.

Text-figs. 23, 24 & 27.

Banks, 1896, p. 58.

WYO.: TETON PARK: Moran; (D. C. Lowrie).

*Micaria hesperella* Gertsch & Jellison, 1939.

*Micaria constricta* Emerton, 1894, p. 414, pl. 2, fig. 5.

*M. canadensis* Roewer, 1951, p. 446.

WYO.: TETON PARK: Amphitheater Lake; Garnet Canyon (in talus); Lake Solitude. (Found underneath or running over rocks).

*Micaria jacksonia*, n. sp.

Text-fig. 26.

*Color:* Female: Carapace dark brown, heavily mottled with black, and clothed with white scales. Sternum, endites and labium very dark brown. Coxae and femora dark brown; distal segments of legs orange; femora covered with white and black scales; abdomen gray, covered with dark iridescent scales except for a median lighter chevron pointing forward, and two anterior lighter areas, one on each side. The two areas as well as parts of the chevron covered with white scales. Venter lighter gray, with some light colored scales just behind and around the epigynum.

*Structure:* Female: Similar to *M. montana* Emerton, 1890; however, the carapace is narrower, particularly in the head region. Carapace widest between the second and third coxae and if examined from the side, highest near the third coxa, and sloping slightly towards the eye region. Clypeus as wide as the diameter of an anterior lateral eye. Anterior median eyes are slightly smaller than the anterior laterals and about equal to posterior laterals. Both eye rows are procurved. Anterior medians are about their diameter apart, and less than a third their diameter from the laterals. The oval posterior medians separated by two long diameters from each other and by one and a half from the laterals. Anterior and posterior laterals are separated by a diameter of the former. Median ocular quadangle longer than broad and about as wide in front as behind. Abdomen elongate oval without any constrictions. Epigynum is illustrated by Text-fig. 26.

Measurements	Female	
Total length	4.50 mm.	
Carapace		
Length	1.40	
Width	1.05	
Sternum		
Length	.86	
Width	.67	
First leg	Fourth leg	
Femur	1.10 mm.	1.40 mm.
Patella	.48	.54
Tibia	.83	1.10
Metatarsus	.64	1.10
Tarsus	.80	.80
Total length	3.85 mm.	4.94 mm.

*Records:* Female holotype from shore of Jackson Lake, several miles northwest of Moran, Grand Teton National Park, Wyo., 3 Aug., 1950.

*Micaria tetonia*, n. sp.

Text-figs. 21 & 22.

*Color:* Male: Carapace brown with gray mottling and gray dots. Some white scales cover the carapace. Sternum, endites and labium brown; legs yellow, the first two femora slightly darker. Legs covered with



dark scales. Abdomen dark brown covered with iridescent dark scales, venter of the abdomen lighter brown covered with some iridescent scales. There are no light marks on the abdomen.

*Structure:* Male: Carapace very wide posteriorly, narrowing abruptly in the head region above and anterior to the first coxae. Carapace widest between the third and fourth coxae and if examined from the side, highest between the third and fourth coxae and sloping very slightly toward the eye region. Clypeus as high as a diameter and a half of the anterior lateral eyes. Anterior median eyes smallest, somewhat smaller than the posterior laterals. The longer diameter of the oval posterior medians is subequal to the diameter of the anterior laterals. Anterior laterals appear to be the largest. Both eye rows procurved. Anterior medians are about a diameter and a half apart and almost touch the laterals. Posterior laterals one of their diameters from the posterior medians and a diameter and a half from the anterior laterals. Posterior medians a little more than their diameter apart. Median ocular quadrangle slightly longer than wide and somewhat wider behind than in front. Abdomen not constricted. This species can readily be told from other members of the genus by the structure of the palp.

Measurements	Male	
Total length	3.40 mm.	
Carapace		
Length	1.50	
Width	1.20	
Sternum		
Length	.87	
Width	.75	
First leg	Fourth leg	
Femur	1.30 mm.	1.40 mm.
Patella	.58	.57
Tibia	.96	1.30
Metatarsus	.80	1.30
Tarsus	.80	1.02
Total	4.44 mm.	5.59 mm.

*Record:* Male holotype from lodgepole forest along foot trail to summit of Signal Mountain, Moran, Grand Teton National Park, Wyo., July, 1950.

*Phrurotimpus borealis* (Emerton), 1911.

Kaston, 1948, p. 389, figs. 1356, 1385-1386.  
S. DAK.: CUSTER PARK: near Game Lodge.

*Phrurotimpus certus* Gertsch, 1941.

Gertsch, 1941a, p. 17, figs. 47-48.  
WYO.: DEVILS TOWER.

*Scotinella custeri*, n. sp.

Text-fig. 28.

*Color:* Female: Integument of carapace light yellowish-brown, with some irregular

gray maculations. On the sides these maculations increase to form a gray line. Sternum, endites, labium and legs yellowish-brown. Abdomen dark gray above with a wide white chevron pointing anteriorly near the middle, and some very fine indistinct chevrons or lines posterior. Venter of abdomen much lighter, light gray anterior to the spinnerets, and nearly white behind the epigynum.

*Structure:* Female: Probably close to *S. connectus* (Gertsch), 1941. Clypeus equals in height the diameter of the anterior median eyes, Anterior row of eyes procurved, second row nearly straight. Anterior median eyes separated by one-half their diameter and nearly touching the anterior laterals. Posterior medians separated by their radius and by that same distance from the posterior laterals. Median ocular quadrangle slightly longer than wide, and slightly narrower in front. Anterior median eyes smaller than the anterior laterals which are subequal in size to the eyes of the posterior row. Chelicerae slightly geniculate. The epigynum is illustrated by Text-fig. 28.

Measurements	Female	
Total length	2.15 mm.	
Carapace		
Length	.85	
Width	.61	
Sternum		
Length	.48	
Width	.45	
First leg	Fourth leg	
Femur	.55 mm.	.58 mm.
Patella	.25	.24
Tibia	.59	.58
Metatarsus	.48	.61
Tarsus	.32	.48
Total length	2.19 mm.	2.49 mm.

*Records:* Female holotype and paratype from Custer State Park near Game Lodge, Custer County, South Dakota, 20 June, 1950.

*Scotinella pelvicolens*

(Chamberlin & Gertsch), 1930.

*Phruoronellus pelvicolens* Chamberlin & Gertsch, 1930, p. 138, figs. 6-8.

WYO.: TETON PARK: Uhl Hill.

THOMISIDAE.

CRAB SPIDERS.

*Coriarachne utahensis* (Gertsch), 1932.

*Platyxyesticus utahensis* Gertsch, 1932, p. 5, fig. 2.

WYO.: YELLOWSTONE: Indian Creek (forest). TETON PARK: along Snake River near Moran (in wet woods under bark).

*Ebo* sp.

WYO.: TETON PARK: Uhl Hill.

**Misumena vatia** (Clerck), 1757.

Kaston, 1948, p. 411, figs. 1481-1482, 1496-1498.

S. DAK.: CUSTER PARK: near Game Lodge.

WYO.: YELLOWSTONE: Pebble Creek; Signal Mountain; Moran. (Found sitting on flowers).

**Oxyptila nevadensis** Keyserling, 1880.

Gertsch, 1939, p. 347, figs. 112, 113, 132.

S. DAK.: CUSTER PARK: near Game Lodge.

**Philodromus alascensis** Keyserling, 1884.

Text-figs. 33 & 34.

Keyserling, 1884, p. 674, pl. 21, fig. 22.

WYO.: TETON PARK: Lake Solitude (9,024 ft.); Garnet Canyon (9,000 ft., on talus); Moran.

UTAH: Wasatch National Forest: Farmington Canyon in Davis Co.

**Philodromus aureolus** (Clerck), 1757.

Kaston, 1948, p. 436, figs. 1557-1559.

WYO.: TETON PARK: in wet woods along Snake River near Moran.

**Philodromus speciosus** Gertsch, 1934.

Text-fig. 31.

Gertsch, 1934a, p. 22, figs. 21, 23 ♂.

UTAH: Dixon National Forest: Vermilion Castle.

**Philodromus virescens** Thorell, 1877.

Text-figs. 29 & 30.

Thorell, 1877, p. 500.

WYO.: TETON FOREST: Uhl Hill.

**Philodromus wyomingensis** Gertsch, 1934.

Gertsch, 1934a, p. 18, fig. 17 ♂.

WYO.: YELLOWSTONE: Pebble Creek Camp.

**Thanatus altimontis** Gertsch, 1933.

Gertsch, 1933a, p. 6, figs. 2, 48.

WYO.: TETON PARK: Blacktail Butte.

**Thanatus formicinus** (Clerck), 1757.

Kaston, 1948, p. 438, figs. 1592-1594.

S. DAK.: CUSTER PARK: near Game Lodge.

**Tibellus parallelus** (C. L. Koch), 1837.

*T. oblongus* Kaston, 1948, p. 440, figs. 1607-1608, 1616, 2008.

WYO.: YELLOWSTONE: Pebble Creek Camp Ground (in meadow on vegetation); TETON PARK: Jackson Lake northwest of Moran (on sagebrush).

**Xysticus benefactor** Keyserling, 1880.

Gertsch, 1939, p. 399, figs. 246, 247, 260.

S. DAK.: CUSTER PARK: near Game Lodge.

WYO.: YELLOWSTONE: Indian Creek (meadow); TETON PARK: Jackson Lake northwest of Moran (on sagebrush).

**Xysticus cunctator** Thorell, 1877.

Gertsch, 1939, p. 390, figs. 222, 223, 226, 234 and 235.

WYO.: TETON PARK: Blacktail Butte.

**Xysticus emertoni** Keyserling, 1880.

Gertsch, 1939, p. 374, figs. 158, 159, 197.

MONT.: Cooke.

WYO.: TETON PARK: Two Ocean Lake (in lodgepole forest).

**Xysticus lutulentus** Gertsch, 1934.

Gertsch, 1939, p. 396, figs. 242, 243, 262.

WYO.: TETON PARK: Pilgrim Creek; Two Ocean Lake (in aspen grove).

**Xysticus triguttatus** Keyserling, 1880.

Gertsch, 1939, p. 362, figs. 169, 178, 179.

S. DAK.: CUSTER PARK: near Game Lodge.

WYO.: DEVILS TOWER.

## SALTICIDAE.

## JUMPING SPIDERS.

**Evarcha hoyi** (Peckham), 1883.

Kaston, 1948, p. 469, figs. 1713-1717, 2134-2136.

S. DAK.: CUSTER PARK: near Game Lodge.

WYO.: TETON PARK: Signal Mountain (in lodgepole forest).

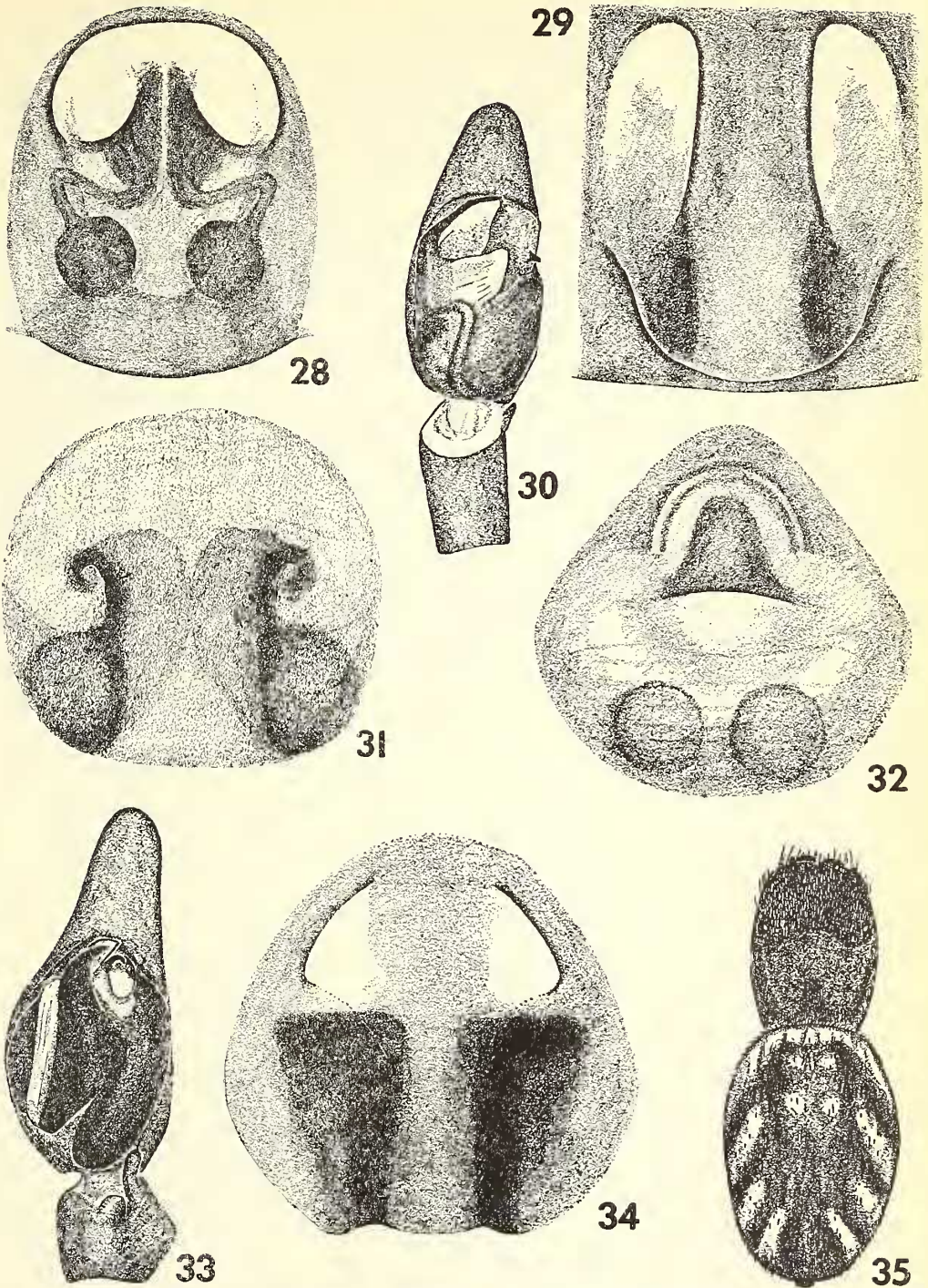
**Habronattus altanus** (Gertsch), 1934.

Text-figs. 32 & 35.

*Pellenes altanus* Gertsch, 1934b, p. 21, fig. 21 ♂.

Female: Integument of the carapace brown except for the area between the eyes, which is black. Light brown scales and black hairs cover the area of the carapace above. On each side appears a band lacking light brown scales, and another of equal width below along the margin with white or light brown scales. Chelicerae light brown. Labium, endites, sternum and coxae yellowish-brown, covered with some white and black hairs. Legs light brown with some irregular darker mottling covered in part by white scales. Integument of abdomen dark brown except for light areas shown in Text-fig. 35. Venter light yellowish-brown except for the faint indications of three longitudinal darker bands. Area around spinnerets darker. Dorsum, sides and area around spinnerets cov-





TEXT-FIGS. 28-35. 28—*Scotinella custeri*, n. sp., epigynum. 29—*Philodromus virescens* Thorell, epigynum. 30—*Philodromus virescens* Thorell, palp, ventral view (specimen from Calif.). 31—*Philodromus speciosus* Gertsch, epigynum. 32—*Habronattus altanus* (Gertsch), epigynum. 33—*Philodromus alascensis* Keyserling, palp, ventral view. 34—*Philodromus alascensis* Keyserling, epigynum. 35—*Habronattus altanus* (Gertsch), dorsal view of female.

ered by scales which are colored light brown above and grade into white scales above the lighter dorsal areas and on the sides. The structure is typical.

A male and female collected together at Gothic, Gunnison County, Colorado. Summer, 1947 (elev. 9,000 ft.).

WYO.: TETON PARK: Amphitheater Lake (elev. 9,750 ft.).

*Habronattus americanus* (Keyserling), 1885.

*Pellenes americanus* Peckham & Peckham, 1909, p. 537, pl. 46, fig. 6.

WYO.: TETON PARK: shore of Jackson Lake northwest of Moran.

*Habronattus brunneus* (Peckham), 1901.

*Pellenes brunneus* Peckham & Peckham, 1909, p. 542, pl. 44, fig. 8, pl. 45, fig. 4.

WYO.: TETON PARK: Pilgrim Creek (on stones of riverbed).

*Habronattus philipi*

(Gertsch & Jellison), 1939.

*Pellenes philipi* Gertsch & Jellison, 1939, p. 12, figs. 1, 2.

WYO.: TETON PARK: Garnet Canyon (elev. 9,000 ft., on talus).

*icius similis* Banks, 1895.

Kaston, 1948, p. 489, figs. 1812-1813, 1838-1840.

S. DAK.: CUSTER PARK: near Game Lodge.

*Metaphidippus clematus*, n. sp.

Text-figs. 37, 39, 40 & 42.

*Color*: Male: Carapace rich dark brown, eyes on black patches. On each side of the carapace is a band of white scales. Above the anterior median eyes are some white scales. Clypeus brown. Chelicerae, sternum and legs brown. Legs covered with white hair and some white scales. Abdomen brown with a marginal band of white scales on each side. Some males show four pairs of darker spots on the abdomen similar to those of the female. Venter of abdomen lighter brown.

Female: Color in general very light. Carapace brown; the eyes are on black patches. Carapace covered with white scales. Clypeus densely covered with white scales. Chelicerae brown, sternum and legs yellow brown. Legs and palps covered with white hairs. Abdomen light yellowish-white with four pairs of more or less distinct spots which may be absent or appear just as darker maculations. Abdomen is covered with white scales and some long dark hairs, except in the region of the spots where there are no scales. Venter of the abdomen light and covered with white scales and hairs.

*Structure*: Typical. The male is similar to *M. montanus* (Emerton), 1891, but can be differentiated by the different structure of

the embolus of the palpal organ. (Text-fig. 42).

The epigynum resembles *M. protervus* (Walckenaer), 1837, and appears to vary considerably in shape in different individuals examined.

Measurements	Male	Female
Total length	4.2 mm.	5.0 mm.
Carapace		
Length	1.8	2.1
Width	1.5	1.7
Tibia-patella		
I	1.5	1.5
IV	1.3	1.6

*Records*: Male holotype and female allotype and male and female paratypes from Medicine Hat, Alberta, in the collection of the American Museum of Natural History. A male specimen from Mammoth Hot Springs, Yellowstone National Park, Wyoming, collected 28 June, 1950; another from Gros Ventre Slide, Teton National Forest, Wyoming, 26 July, 1950.

*Pellenes iagganii* Peckham & Peckham, 1909. Text-figs. 47 & 49.

Peckham & Peckham, 1909, p. 560, pl. 49, fig. 2 ♂.

WYO.: YELLOWSTONE PARK: Indian Creek (on forest floor). TETON PARK: in wet forest along Snake River near Moran.

*Phidippus altanus* Gertsch, 1934.

Text-figs. 48 & 50.

Gertsch, 1934b, p. 12, fig. 13 ♂.

WYO.: TETON PARK: wet woods along Snake River near Moran (abundant under bark of some standing dead trees).

*Phidippus johnsonii* Peckham, 1883.

Peckham & Peckham, 1909, p. 404, pl. 31, fig. 1.

WYO.: TETON PARK: Holly Lake (elev. 9,400 ft., among rocks); Pilgrim Creek; Blacktail Butte.

*Sitticus finschii* (L. Koch), 1879.

Text-figs. 38, 41 & 44.

*Attus finschii* L. Koch, 1879, p. 489, fig. 4.

WYO.: YELLOWSTONE: Indian Creek.

*Sitticus ranieri* Peckham & Peckham, 1909.

Text-fig. 43

Peckham & Peckham, 1909, p. 520, pl. 43, fig. 5.

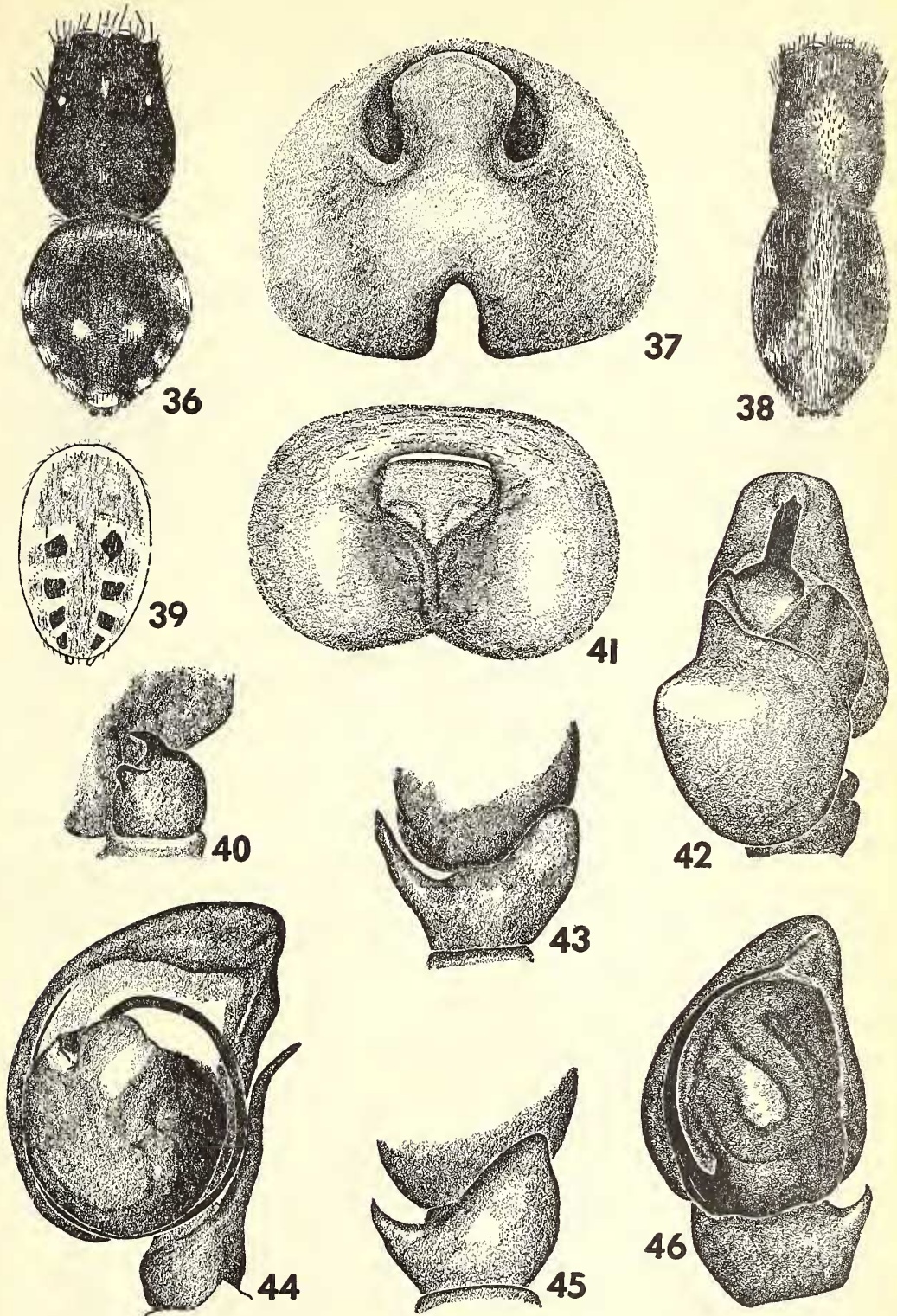
WYO.: YELLOWSTONE: Mammoth Hot Springs. TETON PARK: Holly Lake (elev. 9,400 ft., among rocks).

*Sitticus haydeni*, n. sp.

Text-figs. 36, 45 & 46.

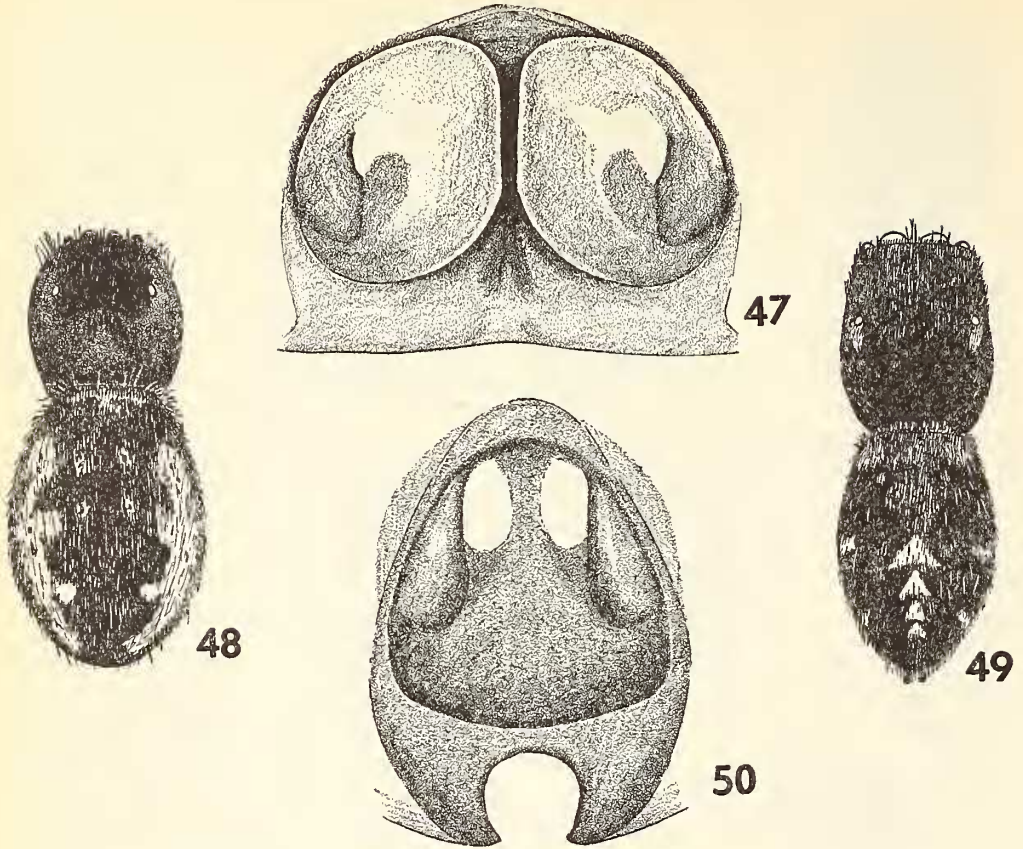
*Color*: Male: Carapace dark brown, eye





TEXT-FIGS. 36-46. 36—*Sitticus haydeni*, n. sp., dorsal view of male. 37—*Metaphidippus clematus*, n. sp., epigynum. 38—*Sitticus finschii* (L. Koch), dorsal view of male. 39—*Metaphidippus clematus*, n. sp., abdomen of female, dorsal view. 40—*Metaphidippus clematus*, n. sp., tibia of palps, lateral view. 41—*Sitticus finschii* (L. Koch), epigynum (specimen from Alberta). 42—*Metaphidippus clematus*, n. sp., palp, ventral view. 43—*Sitticus ranieri* Peckham & Peckham, tibia of palp, dorsal view. 44—*Sitticus finschii* (L. Koch), palp, ventral view. 45—*Sitticus haydeni*, n. sp., tibia of palp, dorsal view. 46—*Sitticus haydeni*, n. sp., palp, ventral view.





TEXT-FIGS. 47-50. 47—*Pellenes lagganii* Peckham & Peckham, epigynum. 48—*Phidippus altanus* Gertsch, dorsal view of female. 49—*Pellenes lagganii* Peckham & Peckham, dorsal view of female. 50—*Phidippus altanus* Gertsch, epigynum.

region black, with some white and some iridescent reddish scales and black hairs above the black area and scattered white scales behind. A distinct patch of white scales between posterior median eyes. Clypeus covered with white scales. Chelicerae brown, sternum dark brown and coxae lighter brown. Sternum and coxae covered by white hair. Legs brown with some dark maculations covered with many black hairs and white scales. Abdomen dark brown above, and covered by white and iridescent reddish and black scales. The dorsum has two indistinct longitudinal bands of black scales on which are a pair of large, white spots. Between the dark bands is a band of white, black and red scales; outside of the dark bands, a band of white and reddish scales which continues as a transverse band anteriorly. This band is interrupted posteriorly by some indistinct white spots. (See Text-fig. 36) Venter lighter brown, covered with white and red scales.

*Structure*: Carapace fairly high, flattened above, the sides abruptly declining. Eyes of the first row slightly recurved. Small eyes of the second row nearer the eyes of the third row. Posterior eye row as wide as the first. Quadrangle of eyes occupying 5/13 of the carapace. In general this species is very

similar in both markings and structure to *S. ranieri* Peckham, but can be differentiated from this species by the shorter tibial apophysis of the palp. (Text-fig. 45).

Measurements	Male
Total length	4.5 mm.
Carapace	
Length	2.2
Width	1.7
Tibia-Patella	
I	1.3
IV	2.1

*Records*: Male holotype was collected in Yellowstone National Park, July, 1931, by W. E. Gertsch.

*Talavera minuta* Banks, 1895.

Kaston, 1948, p. 470, figs. 1738-1739.

WYO.: TETON PARK: Amphitheater Lake (elev. 9,750 ft.).

#### DICTYNIDAE.

*Callobius nomeus* (Chamberlin), 1919.

*Amaurobius nomeus* Chamberlin, 1947b, p. 48, figs. 11, 18.



WYO.: TETON PARK: Leigh Lake; Signal Mountain; Two Ocean Lake. TETON FOREST: Mt. Baldy. (Found on the underside of logs in forests).

*Dictyna alaskae* Chamberlin & Ivie, 1947.

Chamberlin & Ivie, 1947a, p. 13-14, figs. 2, 3.

MONT.: Cooke.

*Dictyna annulipes* Blackwall, 1846.

*D. muraria* Kaston, 1948, p. 506, figs. 1893, 1919-1926, 2073-2074.

WYO.: TETON PARK: in wet woods along Snake River near Moran (on vegetation); Two Ocean Lake (lodgepole forest, on vegetation). TETON FOREST: Gros Ventre Slide.

*Dictyna borealis* O. P. Cambridge, 1872.

*Dictyna cavernosa* Jones, 1947, p. 12, figs. 28-30.

WYO.: TETON PARK: Moran; Jackson Lake northwest of Moran.

*Dictyna cruciata* Emerton, 1888.

Kaston, 1948, p. 508, figs. 1896, 1934-1936.

WYO.: TETON FOREST: Gros Ventre Slide.

*Dictyna major* Menge, 1869.

*D. vincens* Chamberlin, 1919, p. 243, figs. 1, 2.

MONT.: Cooke.

WYO.: TETON PARK: Leigh Lake; Moran (on vegetation in aspen grove and in wet forest along Snake River); Two Ocean Lake (on vegetation in lodgepole forest and in aspen groves); Emma Matilda Lake (on sagebrush); Jackson Lake northwest of Moran (on sagebrush); Signal Mountain (lodgepole forest). TETON FOREST: Mt. Baldy; Togwotee Pass; Gros Ventre Slide.

UTAH: Wasatch National Forest: Farmington Canyon in Davis Co.

*Dictyna phylax* Gertsch & Ivie, 1936.

Gertsch & Ivie, 1936, p. 7, figs. 29-30.

WYO.: YELLOWSTONE: Indian Creek. TETON PARK: Leigh Lake; Signal Mountain; Moran; Emma Matilda Lake (in lodgepole forest).

*Dictyna quadrispinosa* Emerton, 1919:

Emerton, 1919, p. 106, fig. 5.

S. DAK.: CUSTER PARK: near Game Lodge.

*Dictyna tridentata* Bishop & Ruderman, 1946.

Bishop & Ruderman, 1946, p. 2, figs. 3-4.

WYO.: TETON PARK: Leigh Lake.

*Dictyna uintana* Chamberlin, 1919.

Chamberlin, 1919, p. 240, figs. 3-5.

WYO.: TETON PARK: Emma Matilda Lake (on vegetation in lodgepole forest).

*Titanoeca americana* Emerton, 1888.

Kaston, 1948, p. 578, figs. 1970, 1997-2003.

S. DAK.: CUSTER PARK: near Game Lodge.

WYO.: TETON PARK: Signal Mountain (in lodgepole forest).

*Tricholathys spiralis*

Chamberlin & Ivie, 1935.

Chamberlin & Ivie, 1935, p. 28, figs. 21, 99, 100-105.

WYO.: TETON FOREST: Gros Ventre Slide.

#### REFERENCES CITED.

BANKS, NATHAN

1896. New North American spiders and mites. *Trans. Amer. Entom. Soc.*, 23: 57-77.

BISHOP, SHERMAN C. & CROSBY, C. R.

1932. Studies in American spiders: the genus *Grammonota*. *Jour. New York Ent. Soc.*, 40: 393-421.

1936. A new genus of spiders in the Erigoneae. *Proc. Biol. Soc., Wash.*, 49: 39-42.

1938. Studies in American spiders: Miscellaneous genera of Erigoneae, part II. *Jour. New York Ent. Soc.*, 46: 55-107.

BISHOP, SHERMAN C. & RUDERMAN, CLAIRE

1946. Four new species of *Dictyna*. *Proc. Biol. Soc. Wash.*, 59: 1-8.

BLAUVELT, HELEN HAYDEN

1936. The comparative morphology of the secondary sexual organs of *Linyphia* and some related genera, including a revision of the group. *Festschr. Strand*, 2: 81-172.

BRYANT, ELIZABETH B.

1931. Notes on North American Anyphaeninae in the Museum of Comparative Zoology. *Psyche*, 38: 102-126.

CHAMBERLIN, RALPH V.

1908. Revision of North American spiders of the family Lycosidae. *Proc. Acad. Nat. Sci. Philadelphia*, 60: 158-318.

1919. New western spiders. *Ann. Entom. Soc. Am.*, 12: 239-260.

1920. New spiders from Utah. *Canad. Entom.*, 52: 193-200.

1936a. Records of North American Gnaphosidae with descriptions of new species. *Am. Mus. Nov.*, 841: 1-30.

1936b. Further records and descriptions of North American Gnaphosidae. *Am. Mus. Nov.*, 853: 1-25.

1948. The genera of North American Dictynidae. *Bull. Univ. Utah*, 38 (15). *Biol. Ser.*, 10 (6): 1-31.

- CHAMBERLIN, RALPH V. & GERTSCH, W. J.  
1930. On fifteen new North American spiders. *Proc. Biol. Soc. Wash.*, 43: 137-144.
- CHAMBERLIN, RALPH V. & IVIE, W.  
1933. Spiders of the Raft River Mountains of Utah. *Bull. Univ. Utah*, 23 (4). *Biol. Ser.*, 2 (2): 1-79.  
1935. Miscellaneous new American spiders. *Bull. Univ. Utah*, 26 (4). *Biol. Ser.*, 2 (8): 1-79.  
1939. Studies on North American spiders of the family Micryphantidae. *Verh. VII Int. Kongr. Entom. Berlin*, 1: 56-73.  
1940. Agelenid spiders of the genus *Cicurina*. *Bull. Univ. Utah*, 30 (18). *Biol. Ser.*, 5 (9): 1-108.  
1941. North American Agelenidae of the genera *Agelenopsis*, *Calilena*, *Ritalena* and *Tortolena*. *Ann. Entom. Soc. Am.*, 34: 585-628.  
1942. A hundred new species of American spiders. *Bull. Univ. Utah*, 32 (13). *Biol. Ser.*, 7 (1): 1-117.  
1943. New genera and species of North American Linyphiid spiders. *Bull. Univ. Utah*, 33 (10). *Biol. Ser.*, 7 (6): 1-39.  
1945a. Erigonid spiders of the genera *Spirombolus*, *Disembolus*, and *Bactroceps*. *Trans. Conn. Acad. Sci.*, 36: 215-235.  
1945b. Some erigonid spiders of the genera *Eularia* and *Diplocentria*. *Bull. Univ. Utah*, 36 (2). *Biol. Ser.*, 9 (4): 1-19.  
1946. On several new American spiders. *Bull. Univ. Utah*, 36 (13). *Biol. Ser.*, 9 (5): 1-15.  
1947a. The spiders of Alaska. *Bull. Univ. Utah*, 37 (10). *Biol. Ser.*, 10 (3): 1-103.  
1947b. North American Dictynid spiders: The *Bennetti* group of *Amaurobius*. *Ann. Ent. Soc. Am.*, 40: 29-55.
- COMSTOCK, J. H.  
1940. The spider book. rev. by W. J. Gertsch. New York: Doubleday, Doran and Co., Inc. 729 pp.
- CROSBY, C. R.  
1929. Studies in North American spiders: the genus *Cochlembolus*. *Entom. News*, 40: 79-82.
- CROSBY, C. R. & BISHOP, SHERMAN C.  
1925. Studies in New York spiders. Genera: *Ceratinella* and *Ceraticelus*. *New York State Mus. Bull.*, 264: 1-46.  
1931. Studies in American spiders: Genera: *Cornicularia*, *Paracornicularia*, *Tigelinus*, *Walckenaera*, *Epiceraticelus* and *Pelecopsis* with descriptions of new genera and species. *Jour. New York Ent. Soc.*, 39: 359-403.  
1933. American spiders: *Erigoneae*, males with cephalic pits. *Ann. Entom. Soc. Am.*, 26: 105-182.
- DAHL, FRIEDRICH & DAHL, MARIA  
1927. Spinnentiere oder Arachnoidea II: Lycosidae s. lat. (Wolfspinnen im weiteren Sinne). *Die Tierwelt Deutschlands*, 5: 1-80.
- DAVIS, NORMAN W.  
1934. A revision of the genus *Leiobunum* (Opiliones) of the United States. *Am. Midl. Nat.*, 40: 662-705.
- EMERTON, J. H.  
1882. New England spiders of the family Therididae. *Trans. Conn. Acad. Sci.*, 6: 1-86.  
1890. New England spiders of the families Drassidae, Agelenidae and Dysderidae. *Trans. Conn. Acad. Sci.*, 8: 166-206.  
1894. Canadian spiders. *Trans. Conn. Acad. Sci.*, 9: 400-429.  
1911. New spiders from New England. *Trans. Conn. Acad. Sci.*, 16: 383-407.  
1919. New spiders from Canada and the adjoining states. No. 2. *Canad. Entom.*, 51: 105-108.  
1926. New spiders from Canada and the adjoining states. No. 5. *Canad. Entom.*, 58: 115-119.
- GERTSCH, W. J.  
1932. A new generic name for *Coriarachne versicolor* Keyserling, with new species. *Am. Mus. Nov.*, 563: 1-7.  
1933a. New genera and species of North American spiders. *Am. Mus. Nov.*, 636: 1-28.  
1933b. Diagnoses of new American spiders. *Am. Mus. Nov.*, 637: 1-14.  
1934a. Notes on American crab spiders (Thomisidae). *Am. Mus. Nov.*, 707: 1-25.  
1934b. Further notes on American spiders. *Am. Mus. Nov.*, 726: 1-26.  
1935. New American spiders with notes on other species. *Am. Mus. Nov.*, 805: 1-24.  
1939. A revision of the typical crab-spider (Misumeninae) of America north of Mexico. *Bull. Am. Mus. Nat. Hist.*, 76: 277-442.  
1941a. New American spiders of the family Clubionidae I. *Am. Mus. Nov.*, 1147: 1-20.  
1941b. New American spiders of the family Clubionidae II. *Am. Mus. Nov.*, 1148: 1-18.
- GERTSCH, W. J. & IVIE, WILTON.  
1936. Descriptions of new American spiders. *Am. Mus. Nov.*, 858: 1-25.
- GERTSCH, W. J. & JELLISON, W. L.  
1939. Notes on a collection of spiders from Montana. *Am. Mus. Nov.*, 1032: 1-499.
- GERTSCH, W. J. & WALLACE, H. K.  
1935. Further notes on American Lycosidae. *Am. Mus. Nov.*, 794: 1-22.
- HOLM, AKE.  
1945. Zur Kenntnis der Spinnenfauna des Torneträskgebietes. *Arkiv för Zoologi*, 36A: 1-80.
- JONES, SARAH E.  
1947. Descriptions of some species of the spider genus *Dictyna*. *Field & Laboratory*, 15 (1): 1-35.



KASTON, BENJAMIN J.

1948. The spiders of Connecticut. *Conn. Geol. Nat. Hist. Surv., Bull.* 70: 1-874.

KEYSERLING, E. V.

1884. Neue Spinnen aus Amerika V. *Verh. Zool. Bot. Ges. Wien*, 33: 649-684.

KOCH, L.

1879. Uebersicht der von Dr. Finsch in Westsibirien gesammelten Arachniden. *Verh. Zool. Bot. Ges. Wien*, 28: 481-490.

PECKHAM, GEORGE W. & PECKHAM, ELIZABETH.

1909. Revision of the Attidae of North America. *Trans. Wisc. Acad. Sci.*, 16 (1): 355-646.

ROEWER, CARL-FRIEDRICH.

1923. Die Weberknechte der Erde. Jena: Gustav Fischer. 1116 pp.  
1951. Neue Namen einiger Araneen—Arten.

*Abh. naturwiss. Verein Bremen*, 32: 437-455.

SCHENKEL, E.

1950. Spinnentiere aus dem westlichen Nordamerika gesammelt von Dr. Hans Schenkel-Rudin. *Verh. Naturforsch. Gesellsch. Basel*, 61: 28-92.

THORELL, T.

1872. Om några Arachnider från Grönland. *Öfvers. Kongl. Vet. Akad. Förh.*, 29: 147-166.  
1875. Notice of spiders from Labrador. *Proc. Boston Soc. Nat. Hist.* 17: 490-504.  
1877. Description of the Araneae collected in Colorado by Packard. *Bull. U. S. Geol. Surv.*, 3: 477-529.

ZORSCH, HELEN M.

1937. The spider genus *Lepthyphantes* in the United States. *Am. Midl. Nat.*, 18: 856-898.